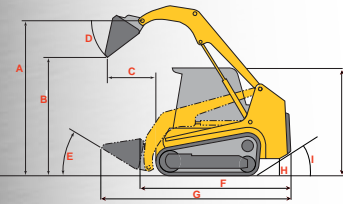


COMPACT TRACK LOADER SPECIFICATIONS

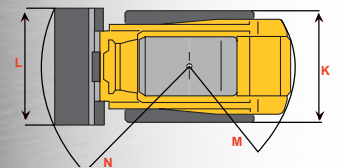
		CTL55	CTL65	CTL75	CTL85
PERFORMANCE	Rated Operating Capacity (SAE J7818, ISO 14397) at 35% Tipping Load (kg)	1246 lbs. (565)	1620 lbs. (735)	2083 lbs. (945)	2470 lbs. (1120)
	Rated Operating Capacity (SAE J7818, ISO 14397) at 50% Tipping Load (kg)	1779 lbs. (807)	2315 lbs. (1050)	2976 lbs. (1350)	3528 lbs. (1600)
	Tipping Load (kg) (SAE J7818, ISO 14397)	3558 lbs. (1779)	4630 lbs. (2100)	5952 lbs. (2700)	7056 lbs. (3200)
	Breakout Force - Bucket (kN)	4821 lbf. (21.4)	6724 lbf. (30.0)	7401 lbf. (32.9)	8669 lbf. (38.5)
	Breakout Force - Lift Arm (kN)	5042 lbf. (22.4)	6709 lbf. (29.8)	7425 lbf. (33)	8547 lbf. (38.0)
	Fuel Tank (L)	15.1 gal. (57.9)	19.8 gal. (75)	23.8 gal. (90.1)	28.5 gal. (108)
	Battery / CCA	12-volt / 600	12-volt / 660	12-volt / 660	12-volt / 800
	Alternator	40 amp	40 amp	50 amp	80 amp
ENGINE	Make/Model	Yanmar / 4TNV84T	Yanmar / 4TNV98	Yanmar / 4TNV98T	Kubota / V3800 DI-T
	Aspiration	Turbocharged	Natural	Turbocharged	Turbocharged
	Displacement (L) / cylinders	121.7 cu.in. (2.0) / 4	202.5 cu.in. (3.3) / 4	202.5 cu.in. (3.3) / 4	230 cu.in. (3.8) / 4
	Horsepower (kW) @ rpm	51.2 hp (38.2)@2800	67 hp (50)@2500	83 hp (62)@2500	92 hp (68.3)@2200
	Maximum Torque (Nm)	120 ft.-lbs. (163)	179 ft.-lbs. (243)	219 ft.-lbs. (297)	240 ft.-lbs. (325)
	Engine Oil (L)	7.8 qts. (7.4)	10.8 qts. (10.2)	10.8 qts. (10.2)	14.0 qts. (13.2)
	Engine Coolant (L)	11.6 qts. (11)	17.4 qts. (16.5)	17.4 qts. (16.5)	17.4 qts. (16.5)
UNDERCARRIAGE	Traction Motor/Traction Drive	Piston / Planetary	Piston / Planetary	Piston / Planetary	Piston / Planetary
	Traction Braking	Hydraulic	Hydraulic	Hydraulic	Hydraulic
	Drawbar Pull (kN)	6634 lbf (29.5)	9918 lbf (40.5)	11,067 lbf (50.0)	13,766 lbf (61.2)
	Roller Type / Track Rollers - each side	Steel / 3	Steel / 4	Steel / 4	Steel / 5
	Track Width (mm)	11.8" (300)	12.6" (320)	18" (457)	18" (457)
	Track Contact Length (mm)	48.9" (1242)	55" (1389)	59" (1496)	63" (1598)
	Ground Pressure (kg/cm ²)	4.7 psi (0.32)	4.9 psi (0.34)	4.3 psi (0.29)	4.5 psi (0.31)
	Travel Speed - Low (kg/hr)	0-4.0 mph (0-6.5)	0-4.5 mph (0-7.3)	0-4.7 mph (0-7.6)	0-4.8 mph (0-7.8)
	Travel Speed - High (kg/hr)	0-5.8 mph (0-9.3)	0-6.8 mph (0-10.9)	0-7.2 mph (0-11.6)	0-7.5 mph (0-12.0)
HYDRAULIC SYSTEM	Operating Pressure (bar)	2988 psi (206)	2988 psi (206)	2988 psi (206)	2988 psi (206)
	Auxiliary Hydraulic Flow - standard (L/min)	15.1 gpm (57.2)	18.4 gpm (69.5)	19.8 gpm (74.9)	23.4 gpm (88.6)
	Auxiliary Hydraulic High-Flow - option (L/min)	N/A	N/A	36.3 gpm (137.5)	40.1 gpm (151.7)
	Hydraulic Tank Capacity (L)	7.7 gal. (29.1)	10.2 gal. (38.6)	12.8 gal. (48.5)	15.9 gal. (60.1)
GENERAL SPECIFICATIONS	Approximate Operating Weight (kg)	6129 lbs. (2780)	8014 lbs. (3635)	9700 lbs. (4400)	11,244 lbs. (5090)
	A. Maximum Lift Height to Bucket Pin (mm)	114.4" (2906)	119.3" (3030)	122.9" (3120)	126.1" (3205)
	B. Dump Height (mm)	89.5" (227)	93.4" (2370)	94.8" (2405)	95.7" (2430)
	C. Reach at Maximum Lift (mm)	23.1" (587)	28.8" (730)	34.4" (874)	38.8" (985)
	D. Dump Angle	38.5°	37°	38.5°	37°
	E. Bucket Rollback at Ground Level (mm)	30°	35°	31°	30°
	F. Length without Bucket (mm)	101.7" (2583)	109" (2756)	117.3" (2980)	123.5" (3135)
	G. Length with Bucket (mm)	126.9" (3220)	140" (3543)	147.2" (3740)	156.9" (3985)
	H. Ground Clearance (mm)	9.8" (249)	12.1" (310)	12.8" (325)	13.5" (345)
	I. Angle of Departure	30°	26°	30°	30°
	J. Height to Top of ROPS (mm)	77.6" (1971)	84" (2123)	85" (2167)	91.3" (2320)
	K. Width without Bucket (mm)	57.9" (1471)	62.2" (1580)	70" (1770)	73.2" (1860)
	L. Width with Bucket (mm)	61.5" (1562)	70" (1778)	74" (1880)	86" (2134)
	M. Rear Clearance Radius (mm)	57.9" (1471)	61" (1549)	66" (1666)	72" (1816)
N. Front Clearance Radius w/Bucket (mm)	78.6" (1996)	93" (2362)	90" (2294)	106" (2692)	
BUCKET	Mounting System	Universal Quick-Attach	Universal Quick-Attach	Universal Quick-Attach	Universal Quick-Attach
	Capacity - Heaped (m ³)	11.7 cu.ft. (0.33)	15.3 cu.ft. (0.44)	17.0 cu.ft. (0.48)	20.0 cu.ft. (0.57)

Gehl Company reminds users to read and understand the operator's manual before operating any equipment. Also, make sure all safety devices and shields are in place and functioning properly.

Gehl reserves the right to add improvements or make changes in specifications at any time without notice or obligation.



REFERENCE DIAGRAMS



For more information on Gehl equipment, call our hotline at **1-800-628-0491** or visit gehl.com



West Bend, WI 53095 U.S.A.
Tel: 262-334-9461
Fax: 262-338-7517